

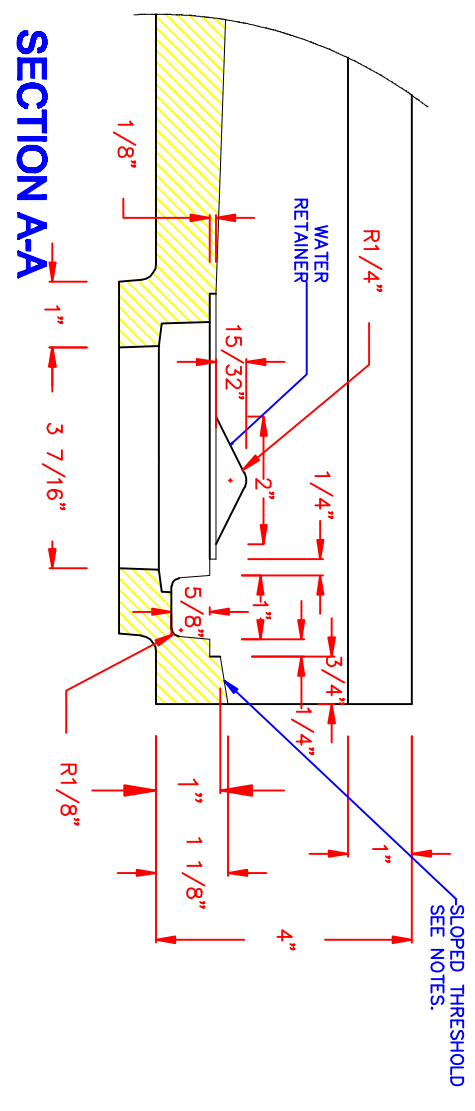
SECTION A-A
SEE DETAIL 1

WATER RETAINER

SECTION B-B
SEE DETAIL 2

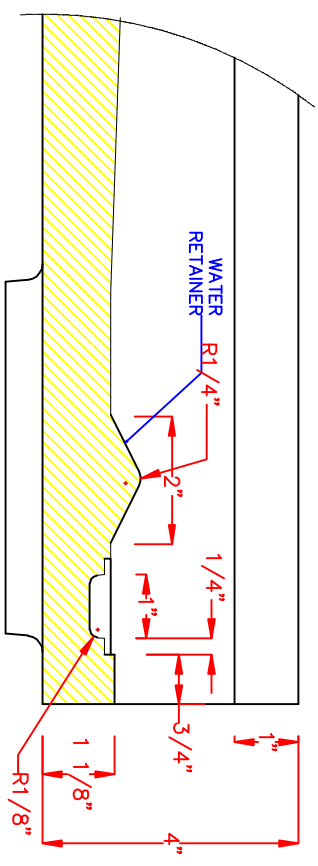
SLOPE OF FLOOR IS 1.2° DIRECTED TO DRAIN

60 3/6"
Nominal Inside



SECTION A-A
Detail 1

SLOPED THRESHOLD
SEE NOTES.



SECTION B-B
Detail 2

NOTES:

1. FRONT THRESHOLD IS 1/8" HEIGHT.
2. SLOPED ANGLE TOWARD TRENCH WILL VARY STARTING ON 0° FROM THE FAR ENDS TOWARD DRAIN. COMPARE SECTIONS A-A AND B-B.
3. TRENCH DEPTH WILL VARY STARTING ON ±1/4" FROM THE FAR ENDS TO 5/8" ON CENTER OF THE PAN. SEE SECTIONS A-A AND B-B TO COMPARE.

AVONITE SURFACES

PART NUMBER:	SKCSTPAD3763
DESCRIPTION:	ADA ROLL IN PAN WITH TRENCH DRAIN 37" x 63"
DATE DRAWN:	5-17-2010
DWG. NUMBER:	

Design Disclaimer
 Arstach Acrylics is the manufacturer of sheets of material and is not in the business of designing, fabricating, or performing installations. nor do we employ architects skilled in the art of design. Any and all liability for a design rests with the architect, or the designer, or the owner, or the user, based on whatever contractual arrangements have been made.