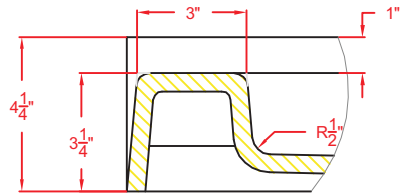
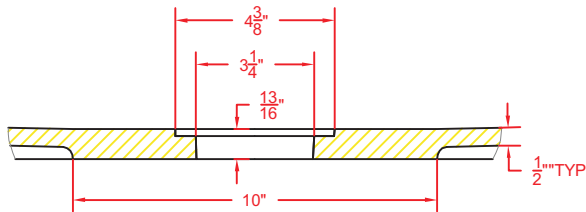


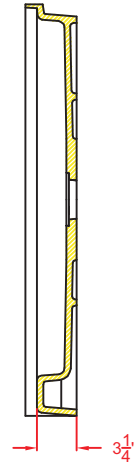
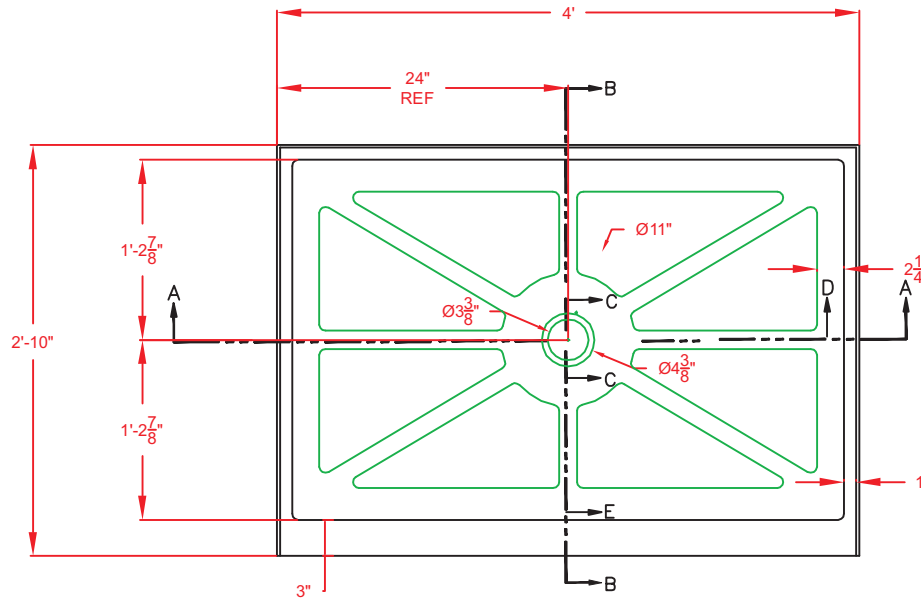
Section D-A



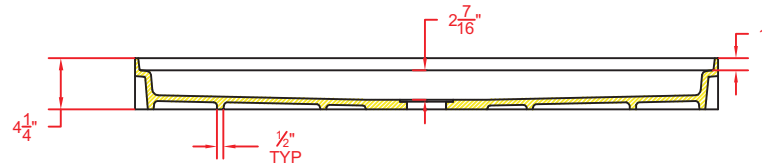
Section E-B



Section C-C



Section B-B



Section A-A

Shower Pan conforms to ANSI Z124.1.2

Refer to installation instructions included with shower pan prior to installation

Installation instructions can also be downloaded from [www.avonitesurfaces.com](http://www.avonitesurfaces.com)

Overall dimensional tolerance is  $+1/8$ " /  $-1/4$ "

Rough Opening is width  $+1/8$ "

**AVONITE**  
SURFACES

PART NUMBER:	SKCSTP3448-(**) Color
DESCRIPTION:	SINGLE THRESHOLD 34" x 48"
DATE DRAWN:	5-17-2010
DWG. NUMBER:	

Design Disclaimer  
Aristech Acrylics is the manufacturer of sheets of material and is not in the business of designing, fabricating, or performing installations; nor do we employ architects skilled in the art of design. Any and all liability for a design rests with the architect, or the designer, or the owner, or the user, based on whatever contractual arrangements have been made.